

Modern social housing

Technical Datasheet

Specification

Model

- PM-RP1

Quantity

- 30 units available within three months, and then 30 per month
- Additional units and other site facilities available upon request.

Module

- 11.3 m long x 3.5m wide x 2 units
- 3.3 m ceiling level and 3.5m high to top of roof level

Specification

- To local country specifications (such as Malaysian Standards and SIRIM compliant)

Certification

Independently certified by Malaysian engineers and trades:

- Architect
- Structural
- Electrical, mechanical and plumbing



Features and finishes

Included in each house

- 1 master bedroom with ensuite bathroom
- 2 guest rooms and 1 guest toilet
- Living area with fans
- Pantry with basic stainless-steel sink
- Balcony and laundry area

Modern social housing

Technical Datasheet

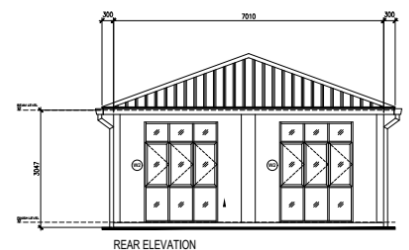
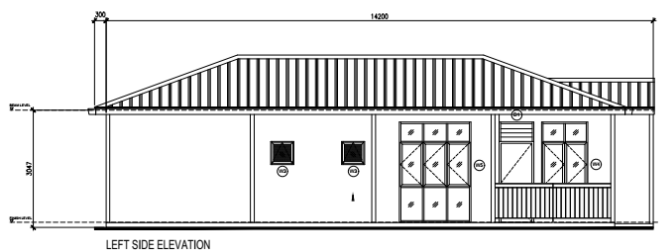
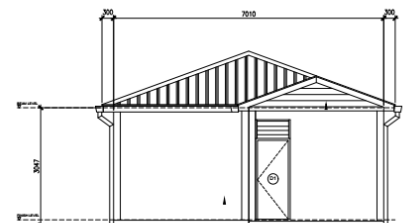
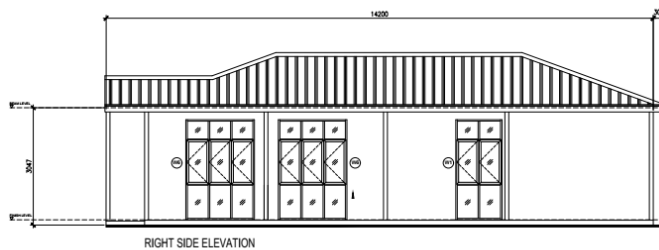
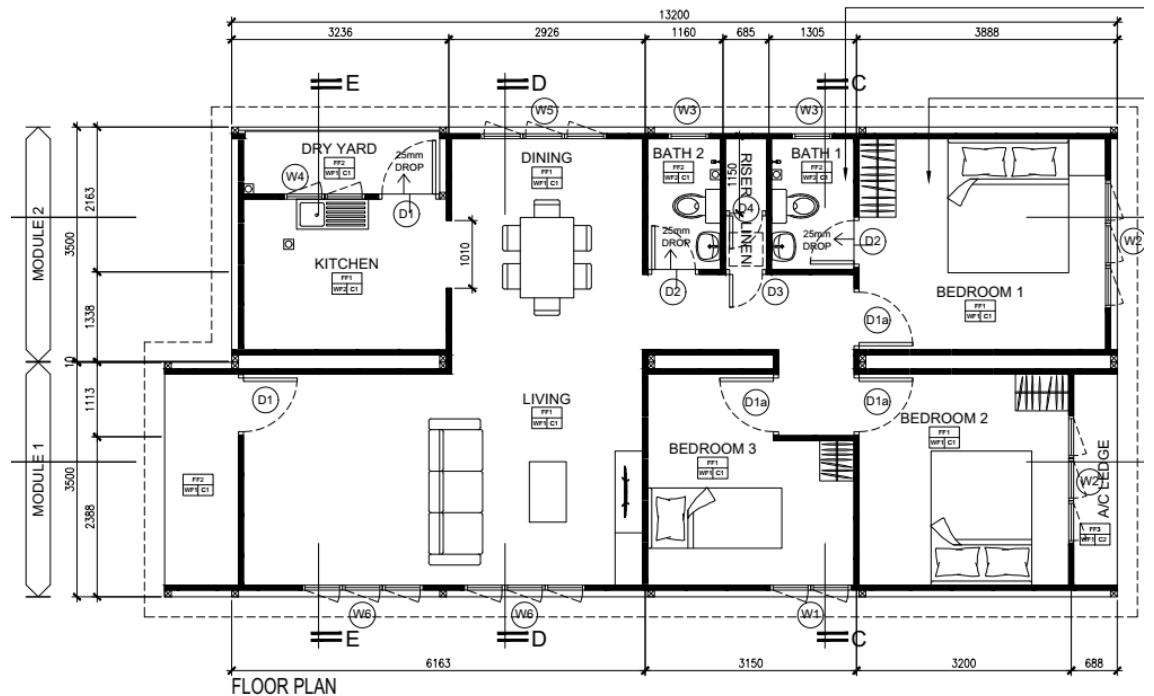
Detailed specification

Main building

- Hot rolled steel chassis and frame (UB chassis, RHS and SHS columns and top beam)
- 125mm reinforced concrete floor on Bondek finished with SPC timber flooring over underlay
- Light weight concrete internal walls with paint finish
- Wood like shiplap external cladding or cement render and metal roof sheeting
- Timber external doors with stainless steel ironmongery
- Aluminium or UPVC glazed slider and windows
- LED ceiling lights
- Power sockets with USB
- Approved pipe fittings and accessories

Bathrooms

- Modular toilet finishes with waterproofing
- Hand basin and mixer
- Water closet
- Shower mixer and set.



Modern social housing

Technical Datasheet

Contact us

Petra Modular (Malaysia)

Jalan Canang Emas 7/KS10,
Kampung Telok Gong, 42000
Klang, Selangor, Malaysia

Luke Tingley
Executive Director
E: luke@petragroup.net
M: +60 176 969 283

Dennis McMahon
Business Development Manager
E: dennis@petragroup.net
M: +60 169 839 715
M: +61 402 612 471

Petra Modular (Australia – West)

Luke Tingley
Executive Director
E: luke@petragroup.net
M: +60 176 969 283

Petra Modular (Australia – East)

74-76 Magnesium Drive,
Crestmead, 4132, Queensland

Matt Ferrie
Business Development Manager
E: sales.westkey@petragroup.net
M: +61 491 036 059

General

www.petramodular.com

