



Modern modular housing

The “Yankee” 2 bed 2 bath

Specification

Model

PM-YAN-TYPE2

Quantity

- 30 units available within three months, and then 30 per month, per factory
- Additional units and other site facilities available upon request.

Modules

- 12.1 m long x 7.0m wide
- 6.85 m long x 5.4m wide (garage)
- 3.3 m ceiling level and 3.5m high to top of roof level.

Specification

- ASTM compliant
- 40 STC between rooms.

Certification

Independently certified by US engineers and trades:

- Structural
- Electrical
- Plumbing
- HVAC
- ASTM Standards

Technical Datasheet



Furniture and equipment

Included in each house

- 2 nos. Ensuite bathroom:
 - Toilet
 - Enclosed Shower
 - Handbasin with vanity
 - Mirror
- Built-in Kitchen cabinet with island
- Hot water unit
- Dishwasher
- Microwave
- Hod
- Electrical cooktop
- External Decking

The “Yankee”

Technical Datasheet

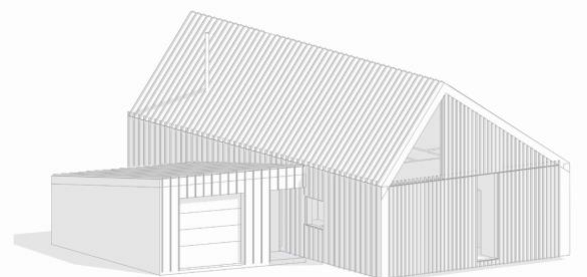
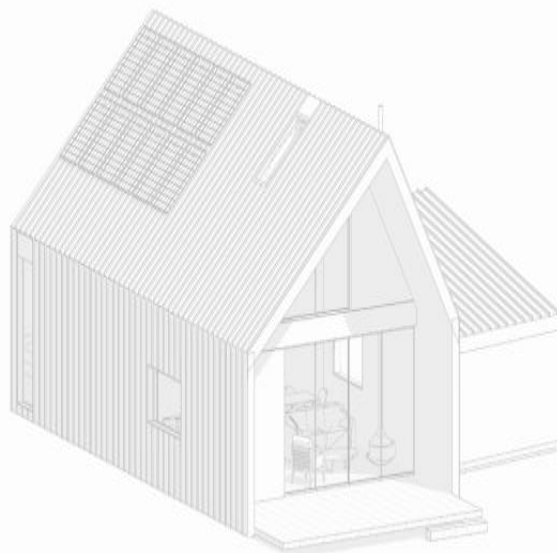
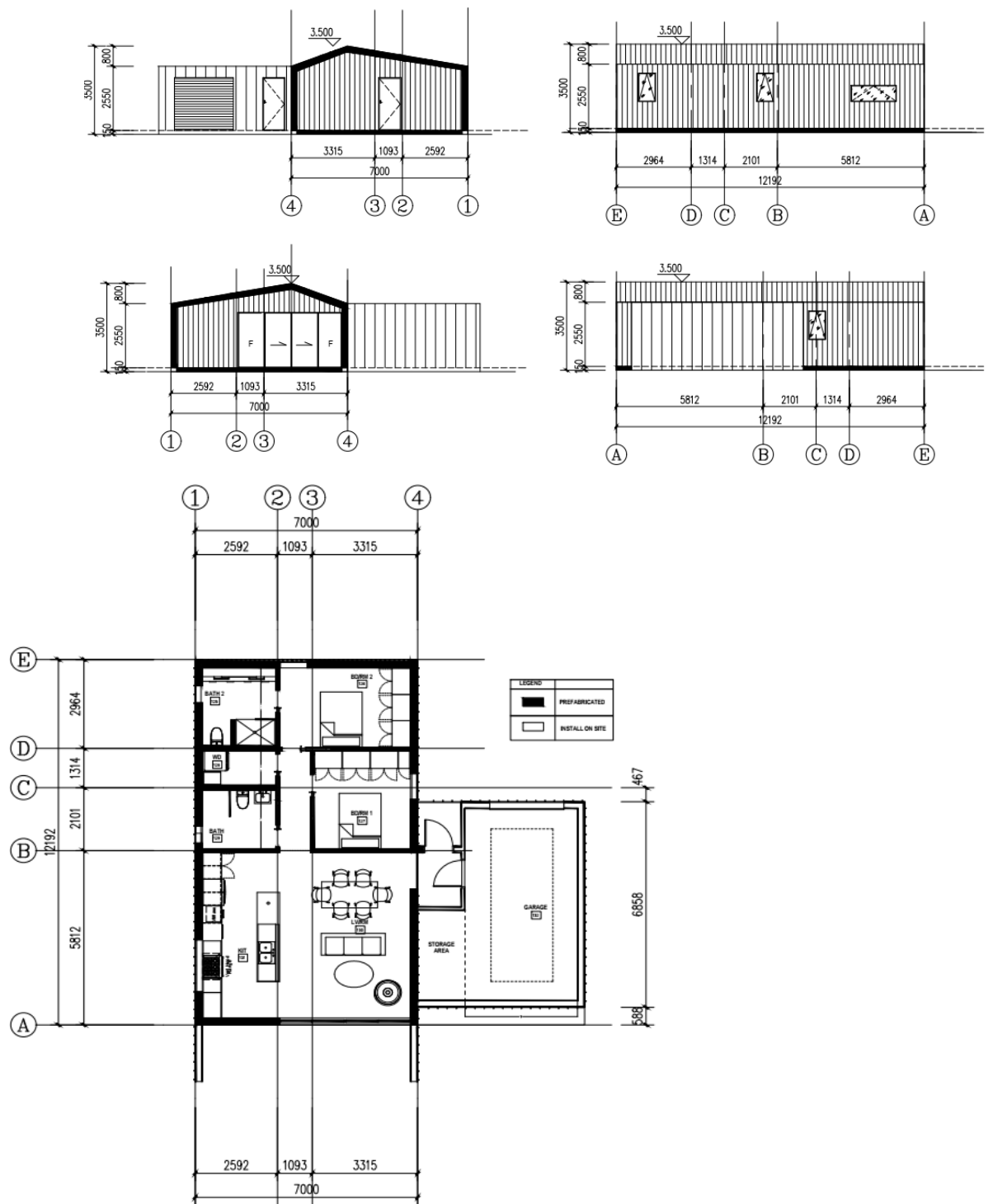
Detailed specification

Structure and walls

- Hot rolled steel chassis and frame (UB chassis, RHS and SHS columns and top beam).
- GI stud framing to walls, ceiling and roof.
- 15mm floorboard on joist floor with 12mm engineered timber plank flooring over underlay.
- OSB board internal walls with bamboo panel finish.
- Fiberglass insulation R-21 to external walls, R-21 to roof and ceiling and R-15 floor.
- Vertical standing seam external cladding and roof sheet.
- Thermal barrier to external walls, roof and floor.
- Insulated fibre glass external doors.
- Aluminium or UPVC glazed slider and windows.

Bathrooms

- Waterproofing to bathroom floor and height of 2m.
- LED ceiling lights.
- Power sockets with USB.
- Pedestal hand basin + mixer.
- Water closet.
- Shower mixer and set.
- Shower tray.
- Glass shower screen.
- Exhaust fan.
- Double towel rack, toilet roll holder, robe hook.





The “Yankee”

Technical Datasheet

Contact us

Petra Modular (Malaysia)

Jalan Canang Emas 7/KS10,
Kampung Telok Gong, 42000
Klang, Selangor, Malaysia

Luke Tingley
Executive Director
E: luke@petragroup.net
M: +60 176 969 283

Dennis McMahon
Business Development Manager
E: dennis@petragroup.net
M: +60 169 839 715
M: +61 402 612 471

Petra Modular (Australia – West)

Luke Tingley
Executive Director
E: luke@petragroup.net
M: +60 176 969 283

Petra Modular (Australia – East)

74-76 Magnesium Drive,
Crestmead, 4132, Queensland

Matt Ferrie
Business Development Manager
E: sales.westkey@petragroup.net
M: +61 491 036 059

General

www.petramodular.com

