

Central Labour Quarters

Technical Datasheet

Specification

Room and building size

- Standard of at least 3.6m² per person allowed (for example as per Malaysia Standards).
- Typical Accommodation Block layout is with 6-person rooms and ablution blocks at the ends of each level, up to 5 levels with access stairs to for a total of 500 to 600 pax per block.
- Typical Amenities Block layout has ground floor for canteen, kitchen, administration and retail shops, with rooms on levels 2 to 5.
- Room and building size can be adjusted to suit client requirements.
- Floor layout can be adjusted to suit apartment-style living, each with individual bathrooms.

Production

- An accommodation block can be manufactured and installed within 6 months, with a 2,000 pax development complete in 12 months.

Compliance

- To local country specifications and as client specified (such as Malaysian Act 446 for Central Labour Quarters).



Central Labour Quarters

Technical Datasheet

Typical specification

Structure and walls

- Hot rolled steel chassis and structural frame
- Poured concrete floor and lightweight concrete walls
- Plasterboard ceiling with painted finish
- Solid core doors (external) and wooden doors (internal)
- Aluminium casement windows.

Bathrooms

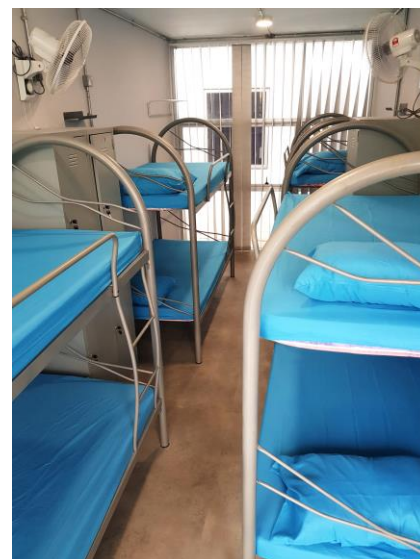
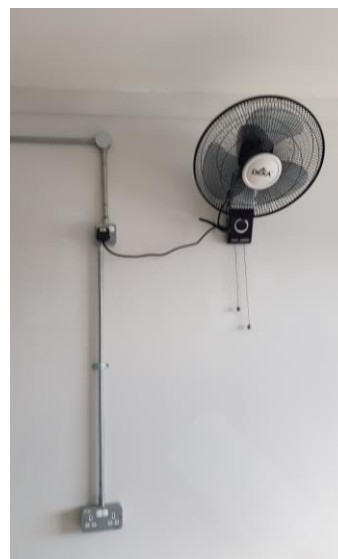
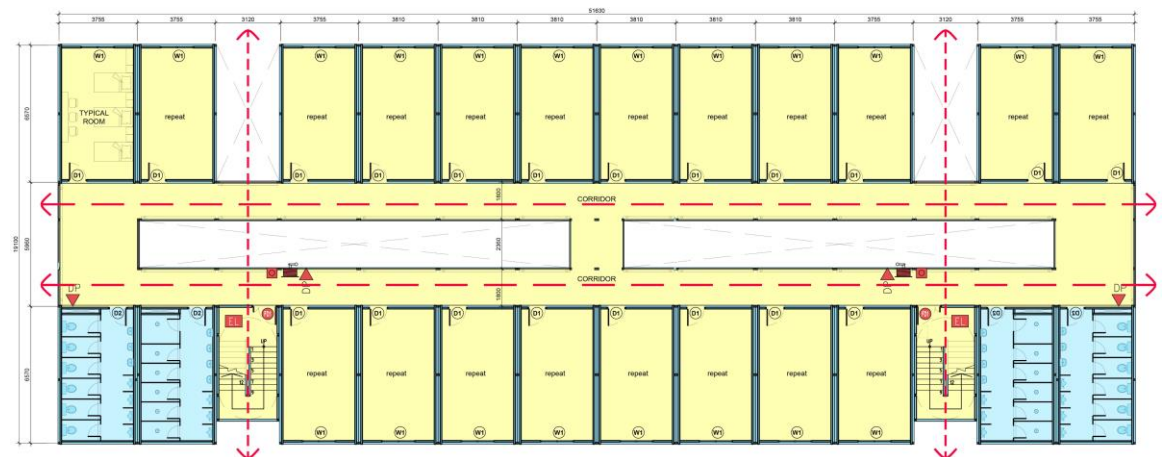
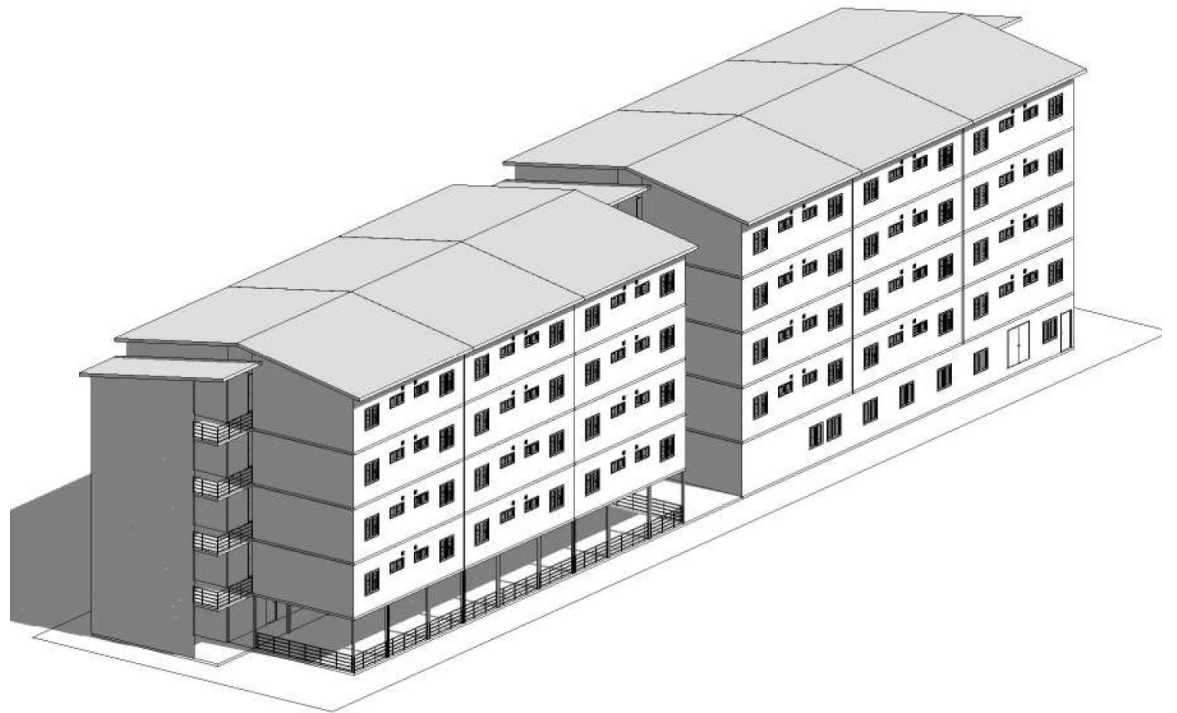
Either two per floor, or in each room:

- Waterproofing to bathroom floor under edge coved vinyl roll
- Oyster ceiling lights
- Power sockets with USB
- Light switches
- Pedestal hand basin and mixer and close couple water closet
- Shower tray, mixer, shower head and glass screen
- Double towel rack, toilet roll holder, robe hook
- Exhaust fan.

Furniture and equipment

In each room:

- 3 x double bunk beds
- 6 x lockers
- Study table and chairs.





Central Labour Quarters

Technical Datasheet

Contact us

Petra Modular (Malaysia)

Jalan Canang Emas 7/KS10,
Kampung Telok Gong, 42000
Klang, Selangor, Malaysia

Luke Tingley
Executive Director
E: luke@petragroup.net
M: +60 176 969 283

Dennis McMahon
Business Development Manager
E: dennis@petragroup.net
M: +60 169 839 715
M: +61 402 612 471

Petra Modular (Australia – West)

Luke Tingley
Executive Director
E: luke@petragroup.net
M: +60 176 969 283

Petra Modular (Australia – East)

74-76 Magnesium Drive,
Crestmead, 4132, Queensland

Matt Ferrie
Business Development Manager
E: sales.westkey@petragroup.net
M: +61 491 036 059

General

www.petramodular.com

